



Durable
Beautiful
Elegant
Dependable

MADERA GIANT

Beyond the limit

It has been Alutex's distinctive feature to offer year after year the most innovative and challenging solutions for the retractable awning market.

Giant is by its own name the largest lateral arm retractable awning today on the market with its 20' maximum projection.

Designed to address the most demanding market for features beyond the limit, Giant sets the new frontier of the retractable lateral arm shade limits. Although special structural requirements are a must for this outstanding product, its design is able to maintain the same elegance typical of the products made to last.

Madera Giant is a double square bar extra heavy duty lateral arm offering the same versatility of any classical lateral arm awning. With its superior structural strength and projections up to 20', Giant is installed with two brackets per arm (13" high) and an extra center bracket to maintain the alignment of its two back square bars.

Although Giant can be installed on regular sidings by using the appropriate installation board, reinforced concrete and/or cinder block walls are highly advised for larger projections.

Thanks to its impressive strength Giant's front clearance can be minimum even with its largest projections (i.e. 2' on 20' projection).

Giant aluminum frame is offered in white powder coated standard color, stainless steel hardware and chained elbows. Custom color frames are available upon request.

CAUTIONARY AND IMPORTANT OPERATING INFORMATION: Retractable Awnings contain strong springs under tension. Retractable awnings are specifically designed to be retracted under inclement weather conditions and be used primarily for sun protection. They are not designed to withstand high winds, heavy rain or snow. During those times, awnings must be fully retracted to prevent damages not covered by warranty.

Product Features

Durable.

Engineered to satisfy the most stringent mechanical requirements, its arms are tested to last twice the expected life span commonly referred to by the industry. Its arms are loaded with double springs whose tension is guaranteed by a stainless steel chain in the elbows.

Beautiful.

Madera Giant's sleek design has been achieved to enhance the value of your home or storefront. With the extensive variety of colors offered today by hundreds of vivid fabrics, the finish of its parts, its compact look when totally retracted, and the elegance of its arms when fully extended, Giant has the look you want.

Elegant.

The discrete design Giant is meant to blend with the siding of your building while extending your presence to your immediate outdoor offering graceful ambiance to any setting. You will appreciate the Giant generous size and uncommon strength.

Dependable.

Built only with the finest materials, Giant's frames are finished with electrostatic powder coated epoxy paint on all its parts to assure the most durable and yet elegant finishing. Like all Alutex awnings, Giant is covered by a ten-year warranty.

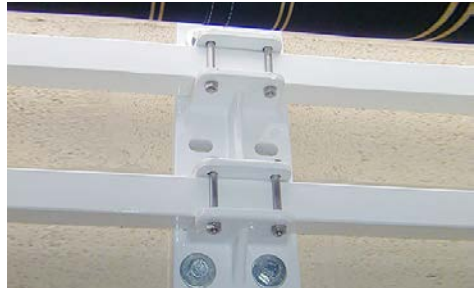
Product Highlights



Each Giant arm is connected to the front bar of the awning with a joint to provide a more perfect and smooth rotation of the arm around its front pin.



Because of the high tension of its arms, Giant is supplied with a cradle center support to maintain the perfect fabric alignment along the rolling tube.



Every Giant is provided with 5 installation brackets, 2 for each arm and one to be installed in the center of the awning.



When completely retracted, Giant still withdraws elegantly within few inches from the wall like any other classical lateral arm awnings.



Every Giant elbow arm is supplied with a stainless steel chain able to control the extremely powerful tension of its springs.



Giant's front bar has been perceived to offer an extra strong stabilizer against high winds without compromising its elegant look.

Technical Specifications

Width Range	18' to 45' (1/8" increment)
Projection Range	15', 16', 17', 18', 19' 20'
Side dimension w/Hood	13" H x 12" W
Side size w/out Hood	13" H x 12" W
Hood	Optional
Hood Shape	13' Round
Opening Control	Motorized only
Installation Option	Wall, Soffit, Roof Mounted
Bracket Size	13" H x 6" W x 1 1/2"D

Drop Down Valance	Optional up to max 24' width
Pitch Control	N/A
Fabric Options	Over 300 acrylic patterns
Leg Kit	Optional
Standard Frame Color	White



Custom Frame Color	Any RAL color (on request)
Frame Warranty	10 Years